



## DOCUMENTATION

TYPE	Multipurpose DP Survey Accommodation Vessel
CLASS	BV *Cable Laying Ship Unrestricted Navigation *AUT-PORT *DYNAPOS *MACH
VESSEL BUILT	1983 Frederikshavn Værft
VESSEL REBUILT	2000 Ørskov Steel Shipyard
FLAG	Marshall Islands

## MAIN DIMENSIONS

LENGTH OVERALL	136.70m	448.49 ft
LBP	122.50m	401.90 ft
BREADTH	19.38	63.58 ft
SUMMER DRAFT	6.58m	21.59 ft
DEPTH MOULDED	11.60m	38.06 ft
GROSS TONNAGE	10,471 GT	
NET TONNAGE	3,142 NT	

## CARGO CAPACITY

DEAD WEIGHT	6,115MT	6,019 LT
CLEAR DECK	510m <sup>2</sup>	5490 FT <sup>2</sup>

## TANK CAPACITY

MARINE DIESEL OIL	1533m <sup>3</sup>	405,020 USG
GAS OIL	170m <sup>3</sup>	44,914 USG
WATER BALLAST	2470m <sup>3</sup>	652,576 USG
FRESH WATER	688m <sup>3</sup>	181,770 USG

## CABLE TANK CAPACITY

CABLE TANK NO.1 UPPER	197 t
CABLE TANK NO. LOWER	143 t
CABLE TANK NO.2 UPPER	197 t
CABLE TANK NO2. LOWER	143 t
CABLE TANK NO.3	2000 t
CABLE TANK NO.4	2000 t
TOTAL TANK CAPACITY	4680 t

## ENGINE AND PROPULSION

MAIN ENGINES	1MaK, 12M453AK, 3600 kW/4828 BHP
PROPELLERS	1 Controllable pitch propeller 2 Azimuth thrusters 1100kW
BOW THRUSTERS	1 Brunvoll, 589kW 1 Brunvoll 662kW 1 Azimuth thruster 1500kW
SPEED/CONSUMPTION	Max 16 kts 30m <sup>3</sup> /24hours Service 12 kts 15m <sup>3</sup> /24hours

## AUXILIARIES

MAIN GENERATORS	3 Caterpillar, type 3516 TA/SR 4 Each 1140 kW 1 Caterpillar, type 3516B DiTa/SR4B Each 1825 kW 3 Mercedes Benz, type OM404 A Each 280 kW
-----------------	--

## ACCOMMODATION

1 MAN CABINS	20 x 1
2 MEN CABINS	17 x 2
3 MEN CABINS	4 x 3
4 MEN CABINS	29 x 4
TOTAL BUNKS	182

## AMENITIES

MESS HALL	66 seats
CINEMA	22 seats
LOUNGES	2 rooms
GYMNASIUM	Available
HOSPITAL	2 beds
CONFERENCE ROOM	Available

## MANEUVERING

JOYSTICK	Alstom, with remote and 3 docking stations
DP SYSTEM	Converteam C-series DP Class 1
REFERENCE SYSTEMS	DGPS-2 C-Nav 2050, 1 Hemisphere MBX-4
ACOUSTIC REFERENCE	Sonardyne
TAUT WIRE	Alstom

## DECK EQUIPMENT

CAPSTANS	2 x Ulstein 10 t
MOORING WINCHES	2 x Ulstein MV 12, 2 x Dan type KF
CRANES	2 x 50 TM knuckle jib crane 1.56 t/21 m 5 t 8m, Hydralift 2 x 2t/8m provision cranes
STORAGE WINCHES	2 x 10.000m x 40m rope Hydralift
TUGGER WINCHES	2 x 10 t, Hydralift
WINDLASS	2 x Ulstein 1A 45/50

## NAVIGATION & COMMUNICATION EQUIPMENT

RADARS	1 Furuno far 2817 X-band ARPA radar 1 Nucleus 2 6000A/3/SD S-Band ARPA radar
DISPLAY	1 Nucleus 2 5000A ARPA display 1Nucleus 2 6000 ECDIS NNR-A40 display, PC slave monitor
DGPS	2 Leica MX412 12-channel DGPS Navigator
GYRO COMPASS	1C-Plath Navigate X MK1 Gyro
AUTOPILOT	1 NaviPilot ACII/G
SPEED LOG	1 Consillium SAL860 Dual axis speed log 1 Consillium SAL R-1 Dual axis speed log
ECHO SOUNDER	1 LAZ5000 Echo Sounder 1 ELAC LAZ4420 (LSE131) Echo Sounder 1 Hunsun 4000, 250W PEP GMDA1, A3, console system with Navtex, EPIRB, Sart 3 Saracom GMDSS Portable
VHF	2 Hunsun RT2047D VHF Duplex tx./RX
AERO VHF	1 Tron Air Portable VHF
INMARSAT B	3 Hunsun 3110 portable 1 Hunsun DT 4646E Immarsat B Telex terminal
WEATHERFAX SYSTEM	1 Furuno Fax-208A Mk2 Weatherfax System
UHF	2 Motorola GP900 Portable UHF
NAVTEX	1 Furuno Navtex Receiver
AIS	1 AIS SAAB Monitor
VHF	2 Hunsun 4822 VHF
SVDR	1 Beijing HLD-52

This specification is preliminary and subject to change without notice. Exact tank capacities, deadweight, deck cargo capacity and other figures that have been calculated and may change when the actual vessel is delivered.



### RESCUE AND LIFESAVING EQUIPMENT

2 OFF MOB BOATS	
4 OFF LIFERAFTS. CAPACITY	35 men each
8 OFF LIFERAFTS CAPACITY	25 men each
2 OFF LIFERAFTS CAPACITY	10 men each
2 OFF ENCLOSED LIFE BOATS EACH 70 PERSON	
2 OFF ENCLOSED LIFE BOATS EACH 30 PERSON	

### CABLE LAYING EQUIPMENT

ALL OF THE EQUIPMENT AND CABLE MACHINERY MENTIONED BELOW HAVE THE FOLLOWING SPEEDS WHICH ARE CONTINUOUSLY VARIABLE:

PICK-UP MODE	0 -185 m/min.
PAY-OUT MODE	0 -220 m/min

### SB CABLE LINE

#### CAPSTAN CABLE ENGINE

Max. cable pull	25 T
Cable guides	Fleeting Knives Fleeting Flanges
Drum diameter	4,00m
Drum width	1,05m
Drum clear width	0,80m

#### DO-HB ENGINE

Max. cable pull	6 T
Number of wheel pairs	6

### PS CABLE LINE

#### LINEAR CABLE WINCH

Max. cable pull	20 T
Number of wheel pairs	20
Built in stonker (emergency brake)	

### MISCELLANEOUS CABLE MACHINERY

#### 3 LINEAR CABLE TRANSFER WINCHES

Max cable pull	2T
Number of wheels pairs	2

### STERN CHUTES

Fixed stern chute aft for umbilical  
3 stern rollers aft for two cable lines and one towing line

### TOWING EQUIPMENT

#### TOWING WINCH

Winch type	Traction type
Max. Pulling force	60 T
Wire Diameter	36-44 mm
Pulling speed	15m/min
Release speed	45m/min
Release tension setting	15-40 T

### TOWING WIRE STORAGE DRUM

WINCH TYPE SELF	Tension
MAX. PULLING FORCE	2 T
WIRE DIAMETER	36-44 mm
WIRE CAPACITY	4000 m (44mm wire)

### HEAVE/PITCH COMPENSATION DEVICE

A HEAVE/PITCH COMPENSATION DEVICE IS INSTALLED TO ENSURE PROPER FUNCTION OF TOWING SYSTEM AT LARGE HEAVE/PITCH MOVEMENTS.

### LIFTING GEAR

Repeater crane 5 T traveling crane.

A-Frame 60 T lifting capacity, telescopic lifting frame with hydraulic damping for plough operations, transverse movement of lifting frame to land plough directly in either cable line or in center line (optional)

### HELIDECK

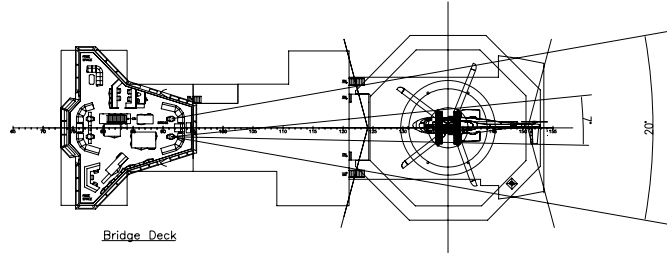
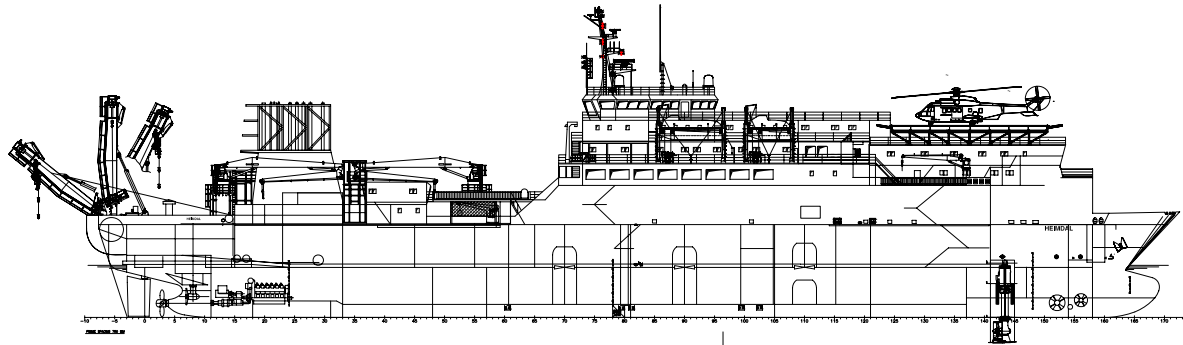
Octagonal enhanced safety Aluminium helideck with aluminium supports in accordance with the following rules:

U.K. CIVIL AVIATION AUTHORITY CAP 437, 5TH EDITION AND  
BUREAU VERITAS RULES FOR HELIDECK PLATFORMS

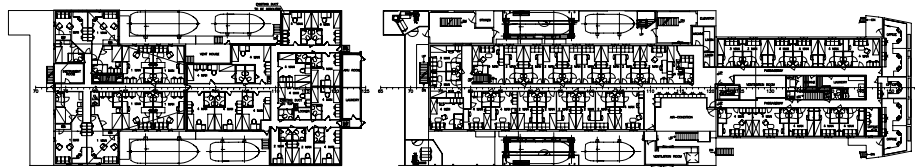
DIAMETER	19.5m
CAPACITY	11 Ton
SAFETY NET SYSTEM WIDTH	1.5m
DESIGN HELICOPTERS	
SUPER PUMA AS 332L2 (MTOW : 9.3MT)	
EC 225 (MTOW : 11 MT)	

Deck is equipped with a Deck Integrated Fire Fighting Foam System (DIFFS) comprising of Pop Up nozzles to spray deck in the event of fire. The enhanced safety system works by allowing burning fuel to pass through densely packed layers of "Explosafe" expanded aluminium mesh. In case of deck surface fire, burning fuel drains through the holes in the helidecking into the Explosafe batts. The fire is retarded and starts to extinguish immediately. The system is recommended by UK CAP 437, 5th edition, Chapter 5 paras 5.2-5.3.

This specification is preliminary and subject to change without notice. Exact tank capacities, deadweight, deck cargo capacity and other figures that have been calculated and may change when the actual vessel is delivered.

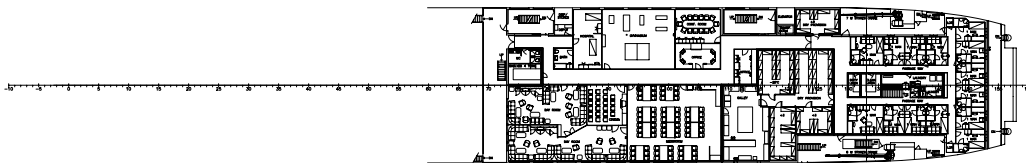


Bridge Deck

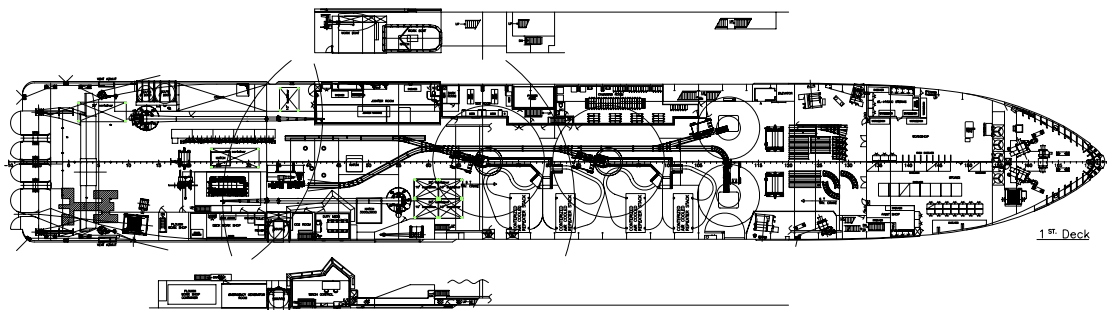


B-Deck

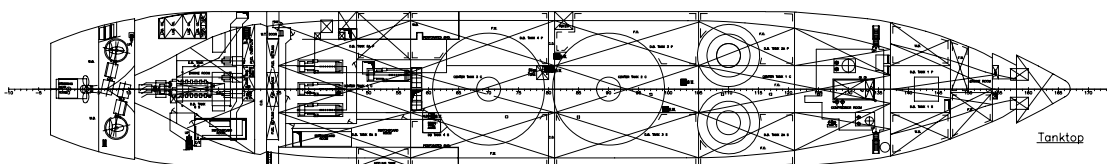
C-Deck



A-Deck

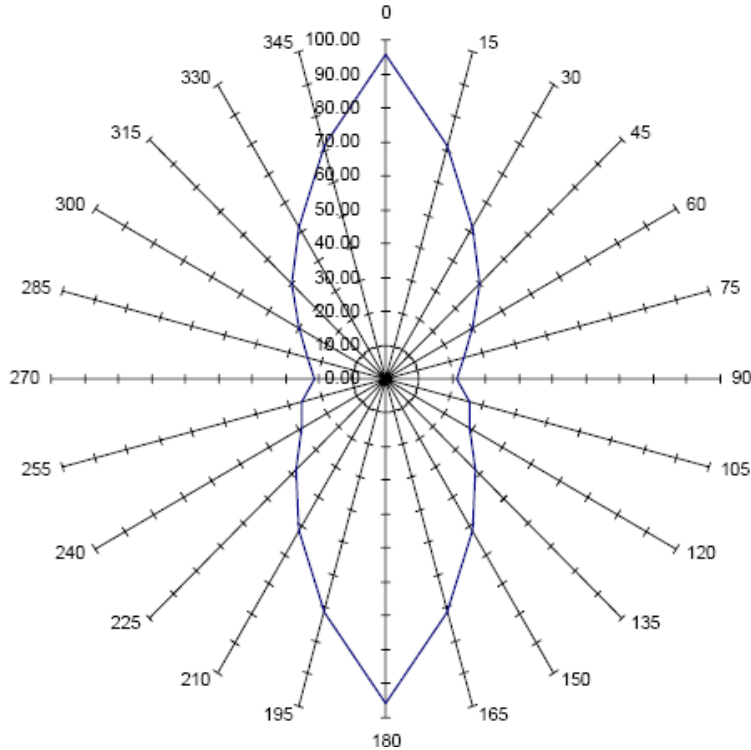


1<sup>st</sup> Deck



Tanktop

### DP Capability Plot with a wind force gust margin of 25%



Wind Angle is stepped from 0 to 360 deg.  
Wave Angle is stepped from 0 to 360 deg.  
Current Angle is stepped from 0 to 360 deg.

Wind Speed is Set Automatically.  
Wave Height is Derived from Wind Speed.  
Current Speed is 1.5 knots.

### Optional 60 MT SWL Hydralift A Frame

